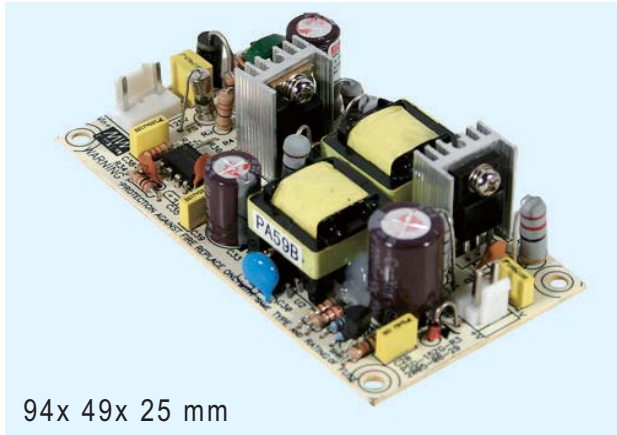
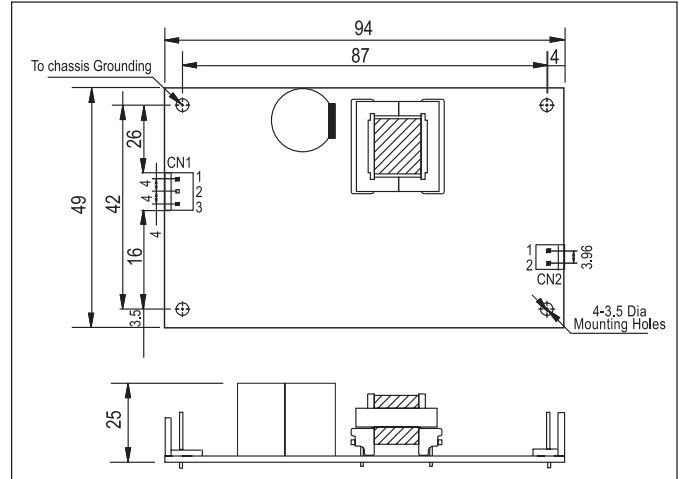


# 15W Single Output DC-DC Converter

- 2:1 wide input range
- 2000VAC I/O isolation
- Protections: Short circuit / Overload / Over voltage / Over temp.
- Built-in EMI filter, low ripple noise
- 100% full load burn-in test
- Low cost, high reliability
- 2 years warranty



94x 49x 25 mm



- Line and load regulation ....  $\pm 1.0\%$  (max.)
- Overload protection ..... 105%~150% hiccup mode, auto-recovery
- Over voltage protection ..... 115%~135% rated output voltage
- Withstand voltage ..... I/P-O/P: 2kVAC, I/P-FG: 1.5kVAC, 1 minute
- Isolation resistance ..... 100M $\Omega$ ( min.) @500VDC
- Working temperature ..... -10 $^{\circ}$ C to +60 $^{\circ}$ C (refer to output derating curve)
- Safety standards ..... Meet LVD
- EMC standards ..... EN55022 class B, EN61000-4-2,3,4,6,8, ENV50204
- Connection ..... 3P, 2P / 3.96mm pitch, JST B3P/B2P-VH
- Packing ..... 0.081kg ; 120pcs / 10.72kg

Model No.	Input	Output	R&N	Effi.
PSD-15A-5	9.2~18V	5V, 0~3.0A	50mV	74%
PSD-15A-12	9.2~18V	12V, 0~1.25A	100mV	67%
PSD-15A-24	9.2~18V	24V, 0~0.6A	100mV	72%
PSD-15B-5	18~36V	5V, 0~3.0A	50mV	78%
PSD-15B-12	18~36V	12V, 0~1.25A	100mV	78%
PSD-15B-24	18~36V	24V, 0~0.6A	100mV	78%
PSD-15C-5	36~72V	5V, 0~3.0A	50mV	78%
PSD-15C-12	36~72V	12V, 0~1.25A	100mV	78%
PSD-15C-24	36~72V	24V, 0~0.6A	100mV	79%